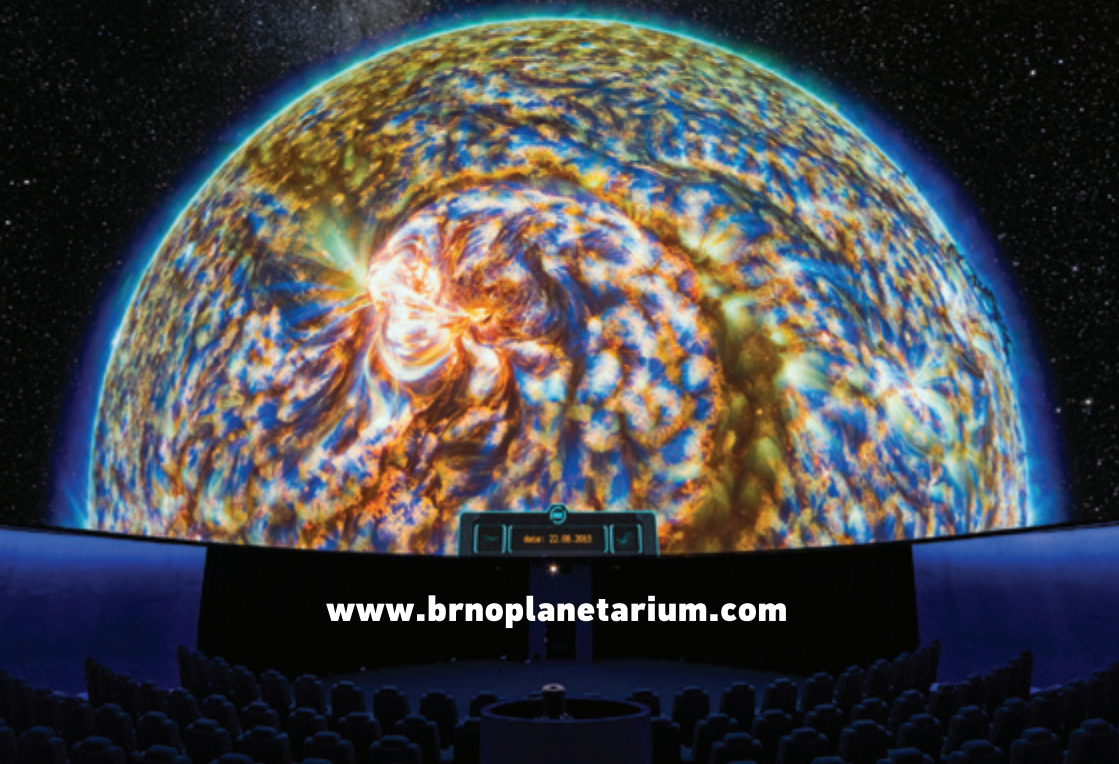




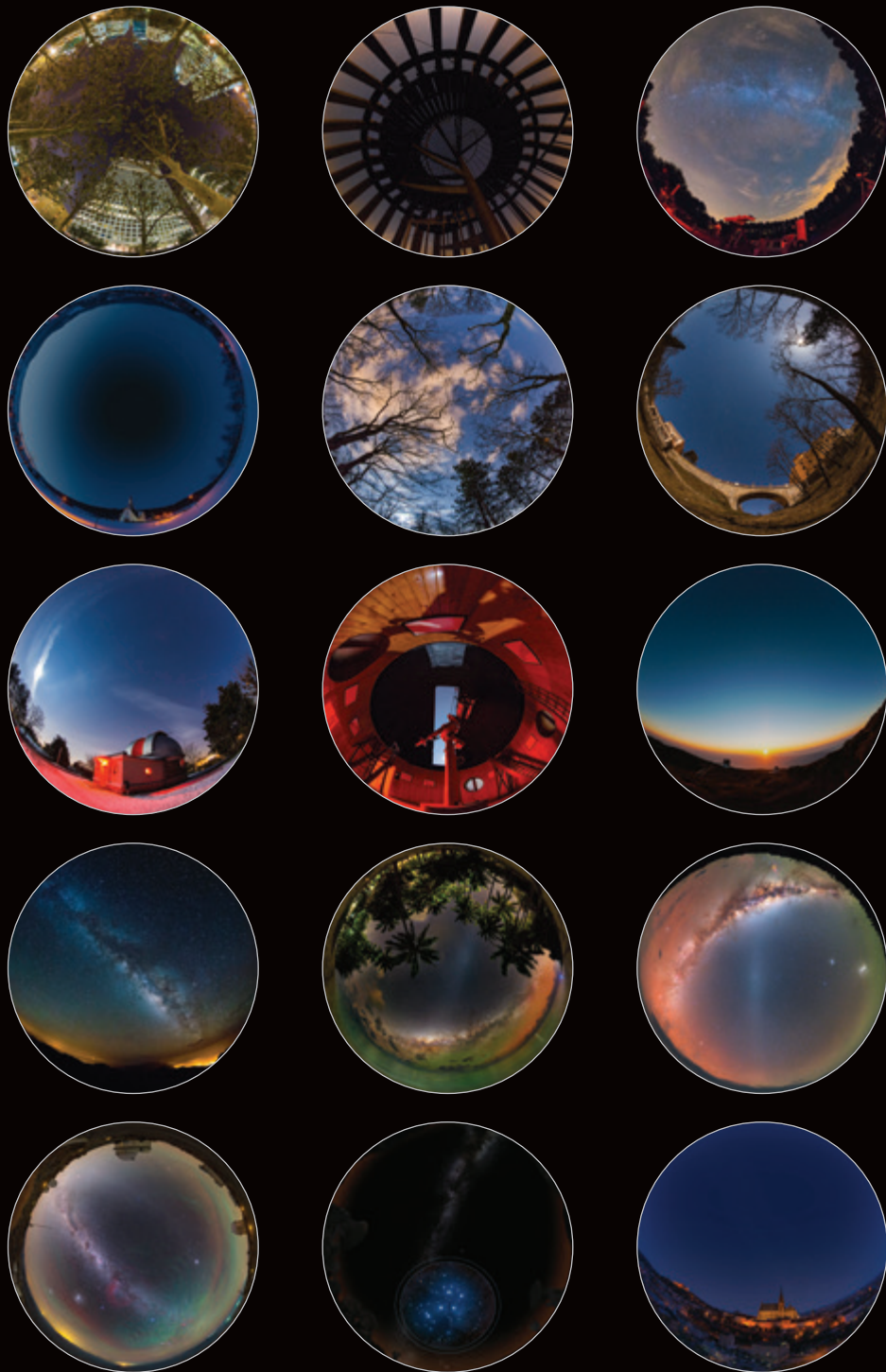
# CATALOGUE

## **OF FULLDOME SHOWS**



[www.brnoplanetarium.com](http://www.brnoplanetarium.com)





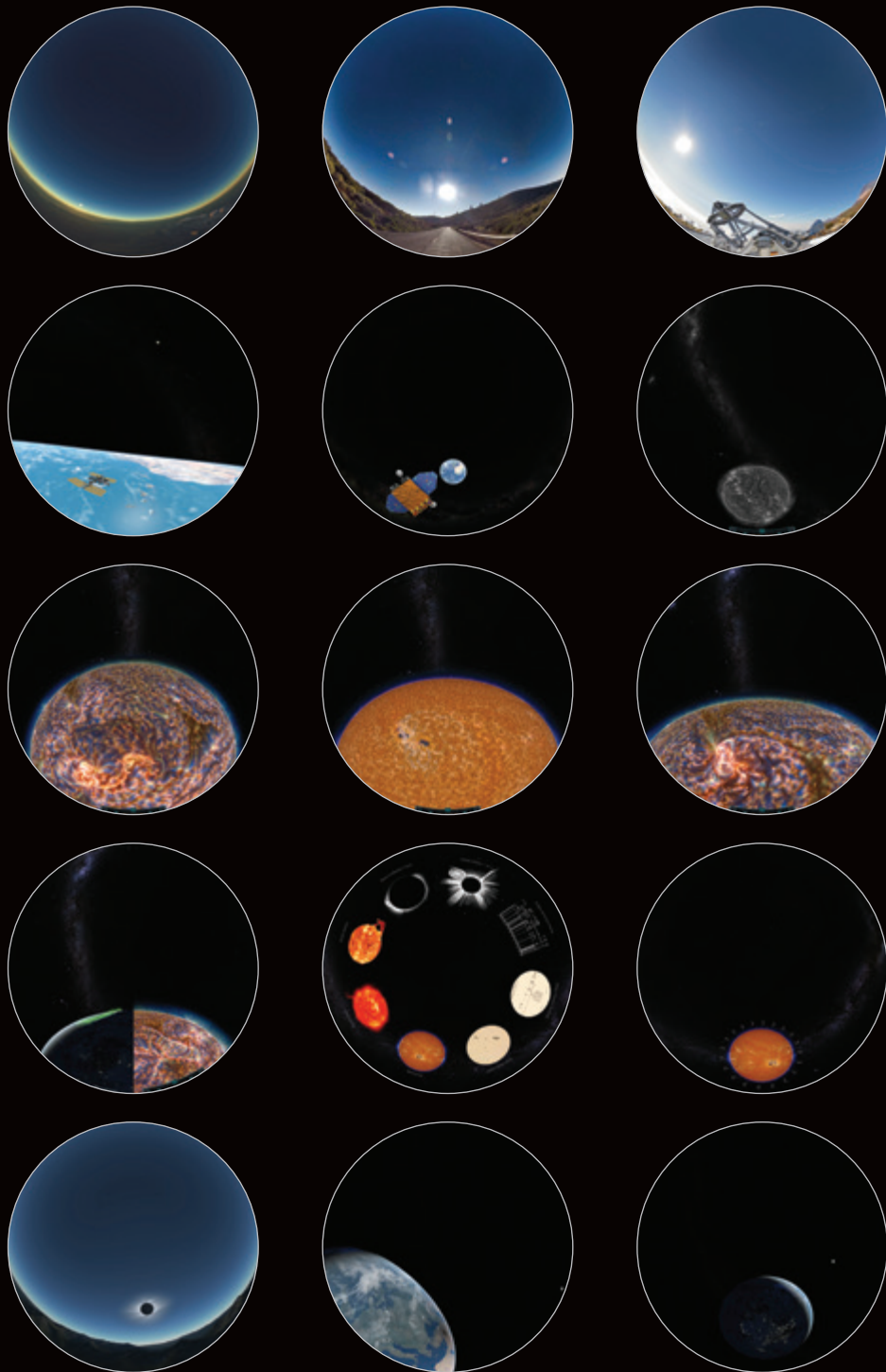
# CLOSER TO THE STARS

The Milky Way rendered in stunning detail, the planets exchanging their glow in distant mirrors, strange islands of stars visible to the naked eye, the reflection of the sun shining off interplanetary dust and the fluorescence of the Earth's atmosphere. Gazing into a truly dark sky offers us all this and so much more.

Unveil the secrets of stray planets, discover the stories inscribed in the constellations and decipher the true origin of the names of the bright stars. Join us as we voyage Closer to the Stars!

34 minutes / schools, families, adults / 4k / 5.1 / unidirectional



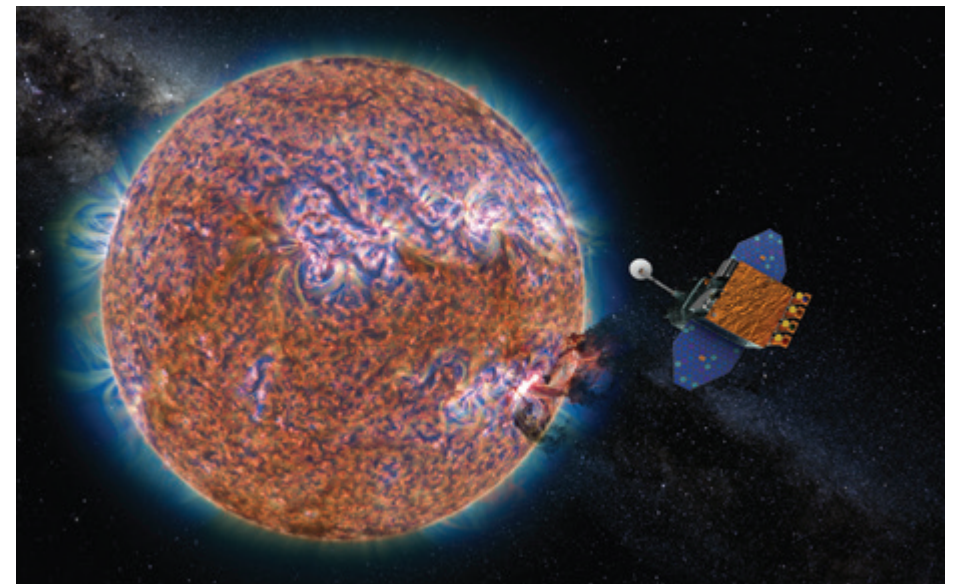


# THE INCREDIBLE SUN

Every second the Sun emits million times more energy than the world consumes every year. Where does such a huge amount of power come from? Discover our star through the breathtaking timelapses. Thanks to the real images taken by the Solar Dynamics Observatory and processed by advanced mathematical methods, you will experience the true nature of the Sun and find out that it is far from being as calm as it seems at first glance.

The Sun's activity, pronounced by terrific solar flares, sunspots and coronal mass ejections, influences our planet, by producing impressive auroras but also by damaging distribution networks and communication satellites. Is it a threat to us, then?

11 minutes / schools, families, adults / 4k / 5.1 / unidirectional







But watch out – you'll be wandering through scorching heat and across freezing wastelands, through the vacuum of space and atmospheres so dense you could cut them with a knife. You'll stray dangerously close to a voracious planet-guzzler, weave your way through moons, rings and asteroids and chase a blazing comet. You'll find yourself getting dizzy inside a gigantic storm, a storm that could easily snatch up the whole of Earth, fly over the top of the largest volcano and along the edge of the deepest canyon.

A composite image featuring a view of the Milky Way galaxy, the planet Jupiter on the left, and two bright, horizontal streaks of light crossing the galaxy. The background is a dark, star-filled space.



# INCREDIBLE UNIVERSE

Well, it's hard with space. It has always been here with us, but still we know very little about it. The thing is, space exploration is not simple at all. If you ask astronomers what in fact space is like, you learn nothing but scary things. For example that it's so freezing and completely dark in space that you—Laika will forgive us—wouldn't send a dog out. Or that space is so huge and maybe infinite that we don't know which end to start the research from. Astronomer's daily, actually nightly, bread is simply rather hard. And what's more, every while they discover something that looks absolutely incredible. Sometimes so much that it even surpasses the craziest sci-fi movies. But this is exactly what our space is like – incredible!

24 minutes / schools, families, adults / 4k / 5.1 / unidirectional







29 minutes / kids, schools, families, adults / 4k / 5.1 / unidirectional



# FURRY ASTRONAUTS

A hedgehog, hare, mole and an owl are four friends who meet on the edge of the forest to explore an almost forgotten spaceport. Everything they find in there is new to them. They haven't seen things like that before. And when they see a rocket launch, they are stunned. None of them has the slightest idea what it is and they come out with many crazy explanations. And maybe they would still be guessing today if they didn't meet a clever mouse. It explains everything to them, because it has spent all its life with the scientists at the astronomical station and so it knows a lot about the universe.

The show is a unique combination of hand-made puppets and virtual CGI world, which will take you to a dream world of a forgotten spaceport. And with a blink of an eye, you will find yourself in space!

25 minutes / kids, schools, families, adults / 4k / 5.1 / unidirectional







# OUR STORY

Close to the centre of Brno there is a hill that for seven centuries has been called Kraví hora (Cow Hill). And you could see cows grazing there until the mid 20th century. Then it started changing into a nice city park with the Brno Observatory and Planetarium growing up on the hilltop. In 1954 it was just a small observatory. Then it got a small planetarium in 1959, and finally the big building was built in 1991.

And it has been so till now. If you get lucky with nice weather, you can meet a lot of people enjoying the sun in the park around. Not far from us there is an indoor and outdoor swimming pool and a baseball field.

In 2005 the Brno Observatory and Planetarium started preparing a transformation into a multi-visual centre. It didn't include only the building but also the programme orientation, personnel and the entire style of work. The complete reconstruction of the building finished in 2011 and the original planetarium was replaced by a digital projection system in 2013.

What technology can you look forward to in our planetarium, now? A hybrid planetarium with a star ball GOTO Chronos II; a 2D projection system 4k RSA Cosmos; and a projection screen Spitz NanoSeam with a diameter of 16.8 m. The planetarium hall can seat up to 189 people. Recently we fitted the dome with a new 2D 4k Front Pictures projection system, as a backup.

You can also find a small Carl Zeiss Jena ZKP-1 projection planetarium in the building. It is installed in a dome with a diameter of 8.5 m and has continuously been in operation since 1959. There is an interactive exposition hall in the basement area of the building providing a modern view of the vicinity of our planet. We have as many as three observation stations fitted with various telescopes – both historical and modern ones with objective lens diameters of up to 30 cm. And in front of the building there is an open air Science Trail Exposition.

In 2015 we had 160,000 visitors, of which roughly 40 percent were school excursions and 60 percent the public. The Brno Observatory and Planetarium is owned by the city of Brno, which contributes to its operation (about 50 percent of the annual budget).

Since 2015 we have been organizing the Central European Fulldome Festivals. Our small production studio can prepare one or two full-length fulldome shows a year. In this production process we aim at effectivity and originality of our shows and collaborate with graphics, script writers, directors, actors and actresses and musicians from the city theatres. Have a look at our web page [www.brnoplanetarium.com](http://www.brnoplanetarium.com)

You don't believe? Come and find out yourself! We'll be glad to show you everything.



**For pricing, availability, languages contact us.**

[www.BрноPlanetarium.com](http://www.BрноPlanetarium.com) | [sales@BrnoPlanetarium.com](mailto:sales@BrnoPlanetarium.com) | +420 775 35 45 55



Brno  
Observatory  
and Planetarium

**Brno Observatory and Planetarium**

Kravi hora 2, 616 00 Brno  
Czech Republic, Europe